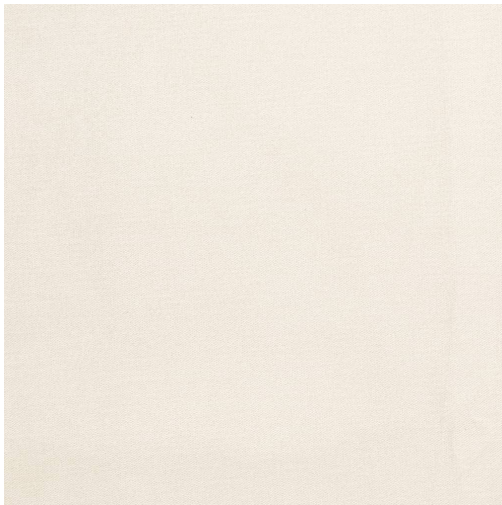


D3833 Pearl



Scan for inventory
& more information



Durability	Exceeds 240,000 Wyzenbeek Rubs (Heavy Duty)
Features	Fade Resistant
Width	54 Inches
Content	90% Polyester, 10% Nylon
Pattern Direction	Shown Not Railroaded (Up the Roll)
Cleanability	Solvent Based
Flammability	CA 117-E, UFAC Class 1, NFPA 260
Origin	Asia
Applications	Upholstery
Markets	Home & Contract
Sample Books	Classic Velvet II (Page #4 Left)